

Eaton Vance Risk-Managed Diversified Equity Income Fund

ETJ

Morningstar Peer Group Classification

Morningstar US Covered Call P

Investment Objective

The Fund seeks current income and capital appreciation through investment in dividend paying common stock and through utilizing a covered call and options strategy

Valuation

	02 Feb 2012	12m High & Low
Price	\$10.62	\$13.15 / \$10.00
NAV	\$12.34	\$14.53 / \$12.29
Discount	-13.94%	-8.77% / -20.51%
Peer Group Discount	-9.15%	
Z-Statistic ¹	-0.30	

Inception Date	27 Jul 2007
Exchange	NY Stock Exchange
NAV Ticker	XETJX
Total Assets	\$900.311m
Net Assets	\$900.311m
Market Capitalization	\$774.822m
Common Shares Outstanding	72,958,783
Preferred Shares Amount	\$-
Total Leverage Ratio ²	0%
1940 Act Leverage Ratio ³	0%
Non-1940 Act Leverage Ratio ⁴	0%
Call Option Overlay (30 Jun 2011)	61.92%
Average Daily Shares Traded (1yr)	0.335m
Average Daily Value Traded (1yr)	\$3.855m
Total Expense Ratio ⁵ (2010)	1.08%
Income-only Rate (Price) ⁶	0.94%
Inc & Cap Gains Rate (Price) ⁷	0.94%
Total Distribution Rate (Price) ⁸	12.03%
Latest Distribution Cover ¹⁰	6.27
Latest UNII per share ¹¹	-\$0.6066

Distribution Policy

The fund pays Quarterly distributions under a level distribution policy

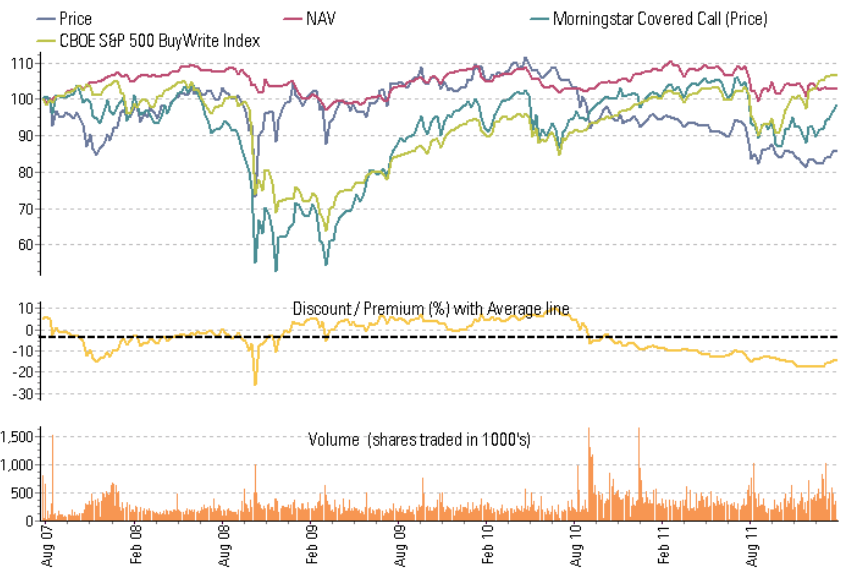
Latest Distribution History¹²

Ex-Date	Income	S/T Cap	L/T Cap	Tot Cap	Rtn Cap	Total
20 Jan 2012	0.0249				0.2946	0.3195
20 Oct 2011	0.0249				0.2946	0.3195
20 Jul 2011	0.0204				0.2991	0.3195
19 Apr 2011	0.0169				0.3026	0.3195
20 Jan 2011	0.0147				0.3048	0.3195
20 Oct 2010	0.0281				0.4219	0.4500
21 Jul 2010	0.0281				0.4219	0.4500
21 Apr 2010	0.0281				0.4219	0.4500
20 Jan 2010	0.0281				0.4219	0.4500
21 Oct 2009	0.0396	0.0021	0.0021	0.4083	0.4500	
22 Jul 2009	0.0396	0.0021	0.0021	0.4083	0.4500	
21 Apr 2009	0.0396	0.0021	0.0021	0.4083	0.4500	

Asset Class (% Total Assets) as at 30 Sep 2011

Equity - Listed	88.4%
Cash Alternatives	-4.3%
Debt - Short term	9.9%
Derivatives	6.0%

Total Return Performance over 5 years (or since inception)

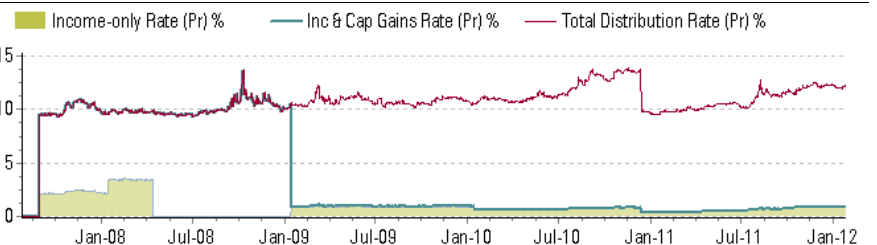


Performance (Total Return%¹³)

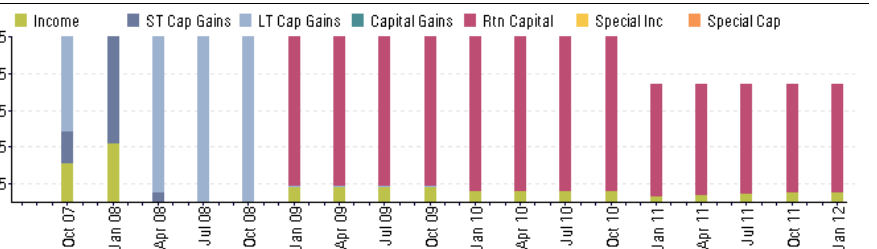
	(Annualized)							
	1 W	1 Mo	3 Mo	6 Mo	YTD	1 Yr	3 Yr	5 Yr
Price	+0.66	+4.72	+4.12	-1.34	+4.72	-8.95	-4.87	-
NAV	+0.33	+0.16	+0.32	-0.70	+0.16	-5.30	+0.92	-
Peer Group (Price)	+1.98	+9.27	+9.32	+0.54	+9.27	-2.22	+13.91	-
Peer Group (NAV)	+0.67	+4.26	+6.11	+2.70	+4.26	+0.53	+13.36	-
Benchmark	+0.59	+2.06	+8.41	+8.13	+2.06	+5.95	+14.27	-

Benchmark: CBOE S&P 500 BuyWrite Index
Fund distributions reinvested on ex-dividend date⁸

Distribution Rates over 5 years (or since inception)



Distributions (\$) over 5 years (or since inception)



Distribution History by Calendar Year¹²

Year	Income	S/T Cap	L/T Cap	Tot Cap	Rtn Cap	Total
2012	0.0249				0.2946	0.3195
2011	0.0769				1.2011	1.2780
2010	0.1126				1.6874	1.8000

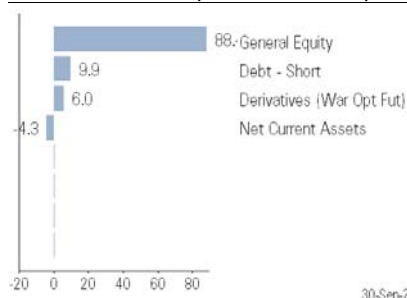
Eaton Vance Risk-Managed Diversified Equity Income Fund

ETJ

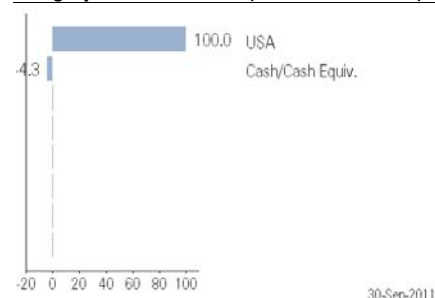
Largest Holdings (% Portfolio) as at 31 Oct 2011

Apple, Inc.	4.4%
Exxon Mobil Corporation	3.3%
AT&T Inc	3.1%
Qualcomm, Inc.	3.0%
Coca-Cola Co	2.9%
Danaher Corporation	2.8%
International Business Machines Corp	2.6%
Google, Inc.	2.6%
Ebay, Inc.	2.4%
Nike, Inc. B	2.4%
Total	29.4%

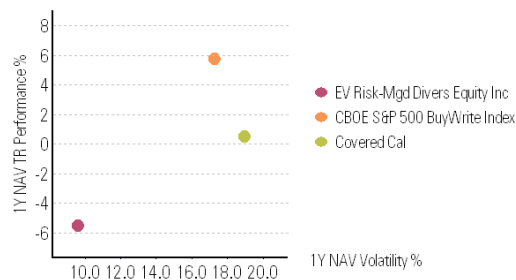
Sector Breakdown (% of total assets)



Geographic Breakdown (% of total assets)



Risk & Return



Risk & Correlation

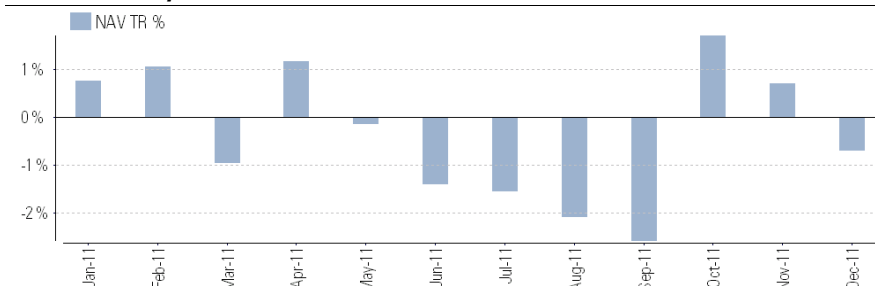
	3 Mo	6 Mo	1 Yr	3 Yr	5 Yr
Alpha (NAV) ¹⁹	-0.07	-0.04	-0.50	-0.27	-
Beta (NAV) ²⁰	0.65	0.42	0.28	0.33	-
R-squared (NAV) ²¹	0.79	0.69	0.64	0.62	-
Sharpe (NAV) ²²	-0.04	-0.46	-0.84	0.14	-
Price Volatility ²³	11	22	17	18	-
NAV Volatility ²³	8	11	10	8	-
Benchmark Volatility ²³	10	22	17	15	19
Peer Group Price Volatility ²³	15	27	21	22	26
Peer Group NAV Volatility ²³	15	24	19	17	20

Benchmark: CBOE S&P 500 BuyWrite Index

Latest Earnings for 3m to 30 Jun 2011

EPS Pre-Prefs distributions, p/m	\$0.0067
EPS Post-Prefs distributions, p/m	\$0.0067
Last Distribution (Income), p/m	\$0.0068
Last Distribution (Inc & Cap Gns), p/m	\$0.0068
Last Distribution (Inc, Cap Gns & Rtn Cap), p/m	\$0.1065
Earnings Rate ¹⁶	98.16
Distribution Cover ¹⁰	6.27
UNII per Share (30 Jun 2011)	-\$0.6066
Expected Life of UNII (months) ¹⁷	n/a

Discrete Monthly NAV Total Return %



Latest Capital Gains for 6m to 30 Jun 2011

Realized Cap Gains per share p/m	\$0.0026
Unrealized Cap Gains per share p/m	-\$0.0001

Capital Reserves as at 30 Jun 2011

Accumulated Unrealized Capital Gains per share	\$2.4702
Accumulated Unrealized Cap Gains/Current NAV ¹⁸	20%

Management Fees

Advisor fee calculated on average daily gross assets at annual rate of 1.00%.

Fund Manager Details

Fund Manager: Michael A. Allison (26 Jul 2007) / Ronald M. Egalka (30 Jul 2007) / Walter A. Row (26 Jul 2007)

Eaton Vance Management

Two International Place, Boston, MA, USA, 02110

Telephone: +1 (0)800 225-6265

Website: www.eatonvance.com

Initial Public Offering

65,000,000 Common shares at 20.00 USD on 27 Jul 2007 raising 1300.0m gross and 1238.9m net of expenses

Additional Performance (Cumulative, i.e. Non-Annualized) Total Return %¹³

Period	Price	NAV	PG Price	PG NAV	FD B'mark
2012	+4.72	+0.16	+9.27	+4.26	+2.06
2011	-12.61	-4.12	-9.10	-0.98	+5.72
2010	-10.30	-0.71	+3.25	+7.91	+5.86
2009	+3.40	+7.36	+42.80	+22.56	+25.91
2008	+6.33	-6.06	-30.80	-28.52	-28.65
2007	-	-	-5.51	+8.69	+6.59
Since Inception (27 Jul 2007)	-13.52	+3.28	+0.26	+2.08	+7.52
Since S&P 500 Low (5 Mar 09)	-3.19	+6.26	+83.69	+66.20	+69.08
Since Sub-Prime Crisis (20 Nov 07)	+1.73	-1.42	+7.72	-0.13	+6.31
Since NASDAQ Recovery (30 Sep 02)	-	-	-	-	+89.56
Since Sep 11 (11 Sep 01)	-	-	-	-	+52.92
Since Enron collapse (15 Oct 01)	-	-	-	-	+64.41

Notes

- 1** Z-Statistic 1y shows whether the fund's current discount is significantly higher or lower than the average over the past year, calculated as $(\text{Current Discount} - \text{Mean}) / \text{Std Dev}$
- 2** Total Leverage Ratio is a measure of how leveraged the fund is by the use of all types of leverage instruments. It is calculated by dividing the sum of the fund's leverage (includes Preferred Shares, Loans, Lines of Credit, Notes Payable/Commercial Paper, Tender Option Bonds, Reverse Repurchase Agreements, Securities Lending and Dollar Rolls) by the fund's Total Assets.
- 3** 1940 Act Leverage Ratio is a measure of how leveraged the fund is by the use of instruments classed as leverage under the 1940 Investment Company Act. It is calculated by dividing the sum of the fund's leverage in the form of Preferred Shares, Loans, Lines of Credit, Notes Payable & Commercial Paper, by the fund's Total Assets minus non-1940 Act Leverage.
- 4** Non-1940 Act Leverage Ratio is a measure of how leveraged the fund is by the use of instruments that are not classed as leverage under the 1940 Investment Company Act. It is calculated by dividing the sum of the fund's leverage in the form of Tender Option Bonds, Reverse Repurchase Agreement, Securities Lending & Dollar Rolls, by the fund's Total Assets minus 1940 Act Leverage.
- 5** Total Expense Ratio is calculated by dividing the total expenses for the year, minus the cost of leverage (i.e. debt servicing and Preferred distributions), by the net assets attributable to the common shares.
- 6** Income-only Rate is calculated by annualizing the income component of the latest regular distribution.
- 7** Inc & Cap Gains Rate is calculated by annualizing the income and capital gains components of the latest regular distribution.
- 8** Total Distribution Rate is calculated by annualizing the total latest distribution (income, capital gains and return of capital components). It is important to note that this Rate may include net investment income, capital gains and/or return of capital.
(All Rates are expressed as a percentage of latest Share Price and exclude "Special" distributions. The finalized composition –i.e. % income, % capital gains, % return of capital - of distributions for previous years is sourced from the official 10-99 reports. The estimated composition of the distributions for the current calendar year is sourced from section 19a-1 notices published by the funds; these estimates are subject to change at the year-end.)
- 9** Tax-Equivalent Rate represents the Rate an investor in the highest federal tax bracket would require on a taxable fund to match the tax-exempt Rate paid by the fund. It is calculated by dividing the Income-only Rate (Price) by $(1 \text{ minus the federal tax rate of } 35\%)$.
- 10** Distribution Cover is calculated by dividing the latest net earnings per share per month after distributions to Preferred Shareholders by the latest total distribution paid per month. A Distribution Cover figure consistently less than 100 indicates that the fund's distribution is at least in part funded from capital gains/return of capital.
- 11** Latest UNII per share is the Undistributed Net Investment Income per share
- 12** Some or all of the distributions from income and short-term capital gains may be classed as qualified dividend income and subject to a reduced federal tax rate of 15%.
- 13** Total Return Performance is calculated by reinvesting distributions at the actual closing share price or NAV on the ex-dividend date as opposed to any dividend reinvestment plan ("DRIP") price. DRIP policies vary greatly between Funds whereas the Morningstar calculation is a pure and consistent calculation across all Funds. Therefore the Total Return performance data may vary slightly from the performance data reported by the Fund. All performance returns are calculated up to the close of business on the previous day, with the exception of the calendar year performance figures in the Additional Performance table on page 2
- 14** % Subject to AMT shows the percentage of the fund's portfolio subject to the Alternative Minimum Tax.
- 15** % Insured shows the percentage of the fund's portfolio insured against loss of principal and coupons.
- 16** Latest Earnings Rate is calculated by dividing the latest net earnings per share per month after distributions to Preferred Shareholders by the latest distribution (income component only) paid per month. An Earnings Rate of less than 100 indicates that the fund is under-earning its current distribution from income.
- 17** Expected Life of UNII (months) is calculated when the Earnings Rate is less than 100%, dividing the UNII per share by the monthly shortfall of net investment income to the latest distribution (income component only) paid per month. The statistic is not calculated if UNII is negative.
- 18** Accumulated Unrealized Capital Gains / NAV shows the accumulated capital gains since the fund's inception as a percentage of current NAV; it is effectively a measure of the store of value within a fund that could be paid out as capital gains were the investments on which gains have been made realized.
- 19** Alpha: The difference between the fund's average excess total return and the benchmark's average excess total return.
- 20** Beta: The sensitivity of the fund to broad market movements. A Beta of 0.5 would imply the fund will move by half as much as the index.
- 21** R-squared: A measure of correlation between the fund and index. A value of 0.8 means that 80% of the fund's NAV changes can be explained by changes in the index.
- 22** Sharpe: A risk-adjusted return measure, calculated by dividing the fund's average monthly excess total return over the risk-free rate by the standard deviation of those returns. The figure shown is the annualized Sharpe Ratio.
- 23** Volatility: The annualized standard deviation of the logged daily returns, adjusting for distributions.
(Risk & Correlation: all statistics calculated on NAV using monthly values, except for volatility that uses daily values.)